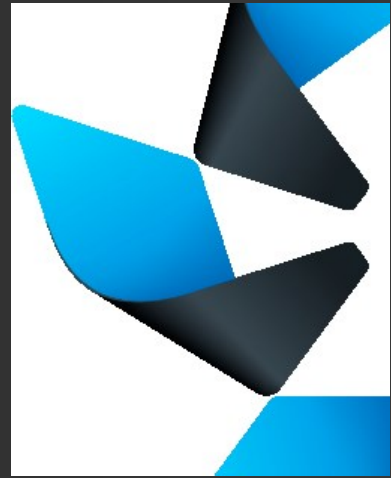


# Guidelines on Connecting a Gear S2 Device Using Wi-Fi



# Copyright

---

Copyright © 2014 Samsung Electronics Co. Ltd. All Rights Reserved.

Though every care has been taken to ensure the accuracy of this document, Samsung Electronics Co., Ltd. cannot accept responsibility for any errors or omissions or for any loss occurred to any person, whether legal or natural, from acting, or refraining from action, as a result of the information contained herein. Information in this document is subject to change at any time without obligation to notify any person of such changes.

Samsung Electronics Co. Ltd. may have patents or patent pending applications, trademarks copyrights or other intellectual property rights covering subject matter in this document. The furnishing of this document does not give the recipient or reader any license to these patents, trademarks copyrights or other intellectual property rights.

No part of this document may be communicated, distributed, reproduced or transmitted in any form or by any means, electronic or mechanical or otherwise, for any purpose, without the prior written permission of Samsung Electronics Co. Ltd.

The document is subject to revision without further notice.

All brand names and product names mentioned in this document are trademarks or registered trademarks of their respective owners.

For more information, please visit <http://www.tizen.org/>

# License

---

Except as noted, this content - excluding the Code Examples - is licensed under Creative Commons Attribution 3.0 and all of the Code Examples contained herein are licensed under BSD-3-Clause.

For details, see the Content License.



# Table of Contents

---

Overview ..... 4

Instructions ..... 5

    1. Setting up the Host PC..... 5

    2. Setting up the Gear S2 device ..... 5

    3. Wi-Fi connection between the Wireless Access Point and Gear S2 ..... 6

    4. Connecting to Gear Watch Designer ..... 7

Troubleshooting ..... 9



---

# Overview

---

This document describes how to connect a Gear S2 device to a Host PC via Wi-Fi.

To connect a Gear S2 device to a Host PC, a wireless access point is needed.

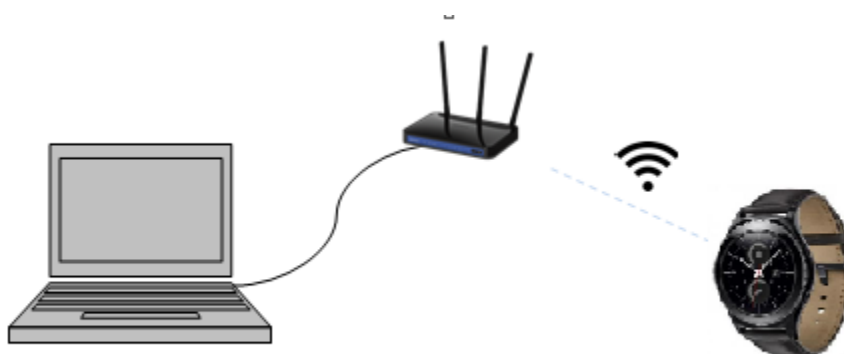


Figure 1 Connect via Wi-Fi



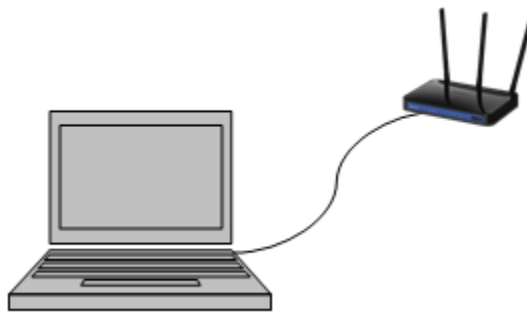
---

# Instructions

---

## 1. Setting up the Host PC

- a. Connect the Host PC to the Wireless Access Point via UTP cable or Wi-Fi.



## 2. Setting up the Gear S2 device

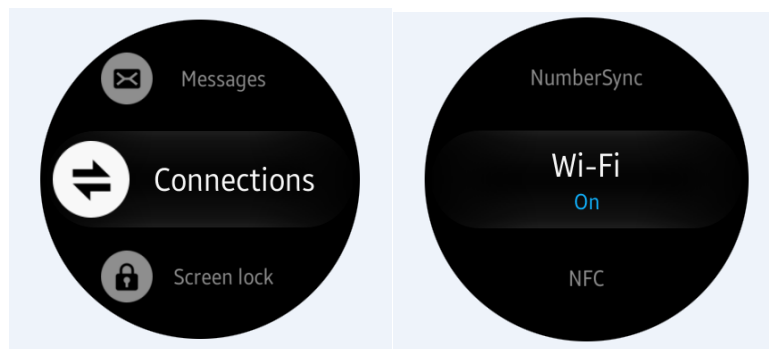
- a. Turn on the Wi-Fi.
- b. Turn on debugging mode.  
Select **Settings** > **Gear Info** > **Debugging**
- c. Reboot the device.





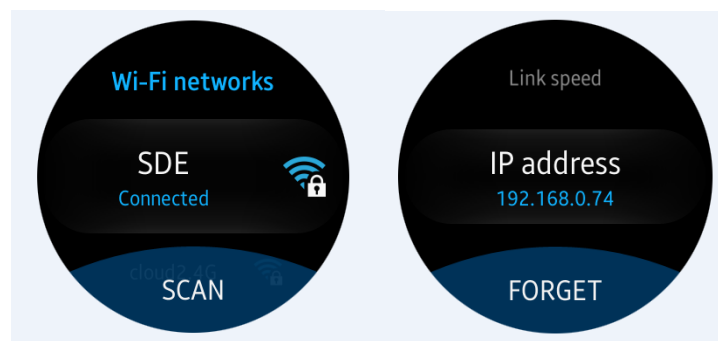
### 3. Connecting the Gear S2 to the Wireless Access Point through Wi-Fi

From the Wi-Fi menu of the Gear S2 device, find the Wireless Access Point and connect to it.



Once connected, find the IP address that the Gear S2 device received from the Access Point via DHCP. This IP address will be shown during the connection in the Gear Watch Designer.

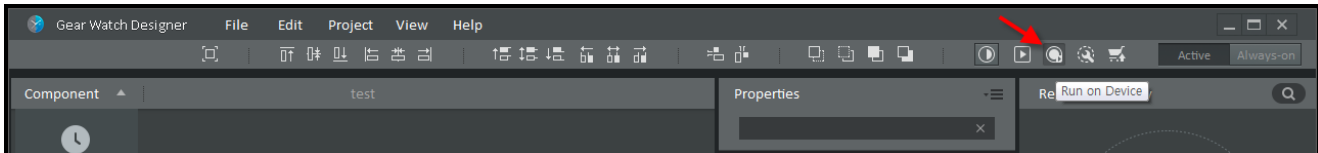
You can get this IP address by checking the information of the access point the Gear S2 device is currently connected to.



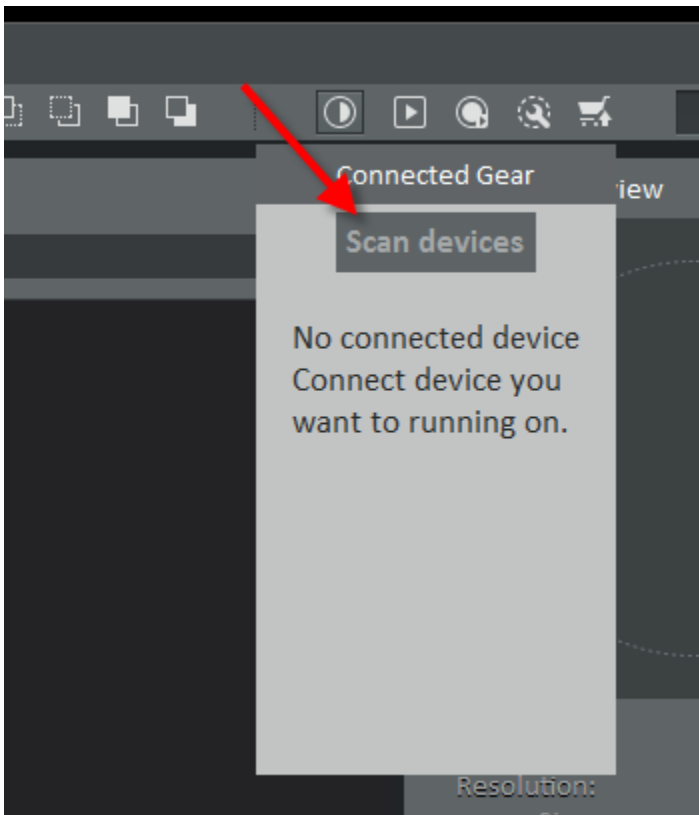
Now you are ready to connect to the Gear Watch Designer.

## 4. Connecting to Gear Watch Designer

Open the Gear Watch Designer and click the **Run on Device** icon on the toolbar.



Select **Scan devices** button, this will start searching GearS2 devices with in subnet.



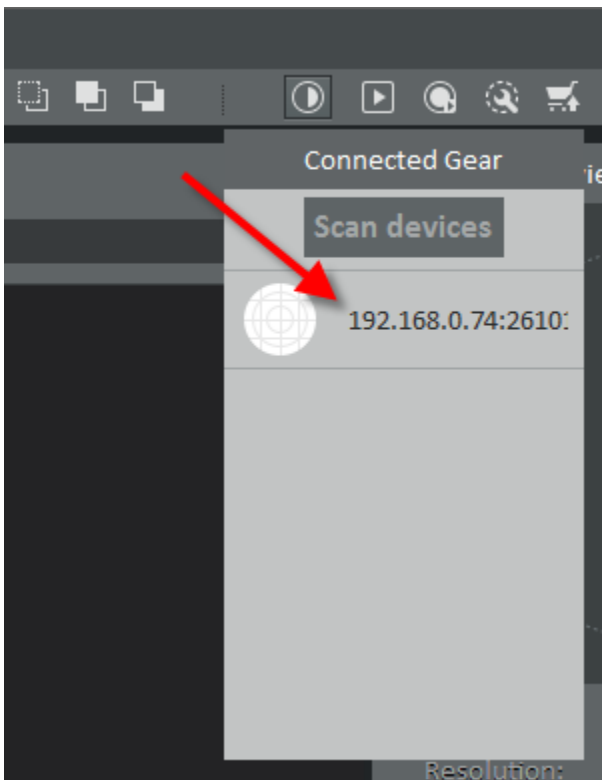
Within a few seconds, you will get the results.

If this is the first time to connect, you will see the below popup on the device. This is for the security. Select **ok** to allow connection. This popup will not be displayed in subsequent connections.





Once the connection is completed, you can select the device to start the installation and run the Tpk.





---

# Troubleshooting

---

- If **Scan devices** doesn't give any results.
  - a. Check if Debugging is **ON**.
  - b. Wake Gear S2 up and retry.
  - c. Reboot the Gear S2 and retry.
  - d. Check if Gear S2 and Host PC are connected to the same Access Point.

## \* NOTE

Bluetooth and Wi-Fi cannot be turned on at the same time on the Gear S2 with its initial firmware. However, the latest firmware fixes this issue. To turn on both Bluetooth and Wi-Fi at the same time; the Debugging mode is switched ON with the recent firmware. (Firmware for US and Japan 3G models will soon be available).

To update the firmware, check the **Gear Software Upgrade** in the Samsung Gear application on your paired mobile device.

